

Scaled data based on original data using
LM-79-08 Approved Method: Electrical and Photometric Measurements of Solid-
State Lighting Products

Test Report Prepared for
Cooper Lighting Solutions
(formerly Eaton)

Brand: INVUE

Report Number: P149393

Luminaire Tested: **VWM-F05-LED-E1-SL2-HSS-8030**

Issue Date: 03/03/2020

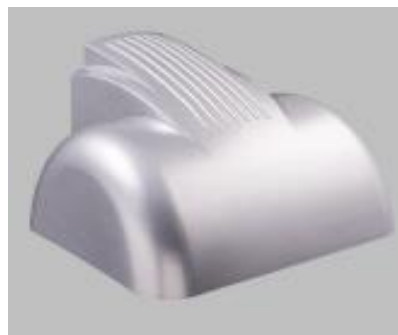
Test Information

Test Method: LM-79-08
Report Number: P149393
REPORT IS SCALED FROM IESNA LM-79-08 TEST DATA (P33726)
Test Lab: INNOVATION CENTER-P3
Issue Date: 03/03/2020
Manufacturer: COOPER LIGHTING SOLUTIONS (FORMERLY EATON)
Product Line: INVUE
Catalog Number: VWM-F05-LED-E1-SL2-HSS-8030
Description: VISION WALL MEDIUM LED LUMINAIRE
(5) LIGHTBARS WITH AccuLED OPTICS - TYPE 2 W/ SPILL LIGHT CONTROL AND HOUSE SIDE SHIELD
Light Source: (35) 3000K CCT, 80 CRI LEDs
Ballast/Driver: -

Summary

Lumens per Lamp: N/A
Luminaire Lumens: 6387.6 lumens
Efficiency: N/A
Efficacy: 47.9 lumens/watt
Luminous Opening: Rectangular (W 0.83' x L: 1' x H: 0')
IES Classification: Type II - Short - Non-Cutoff
BUG Rating: B0 - U0 - G2

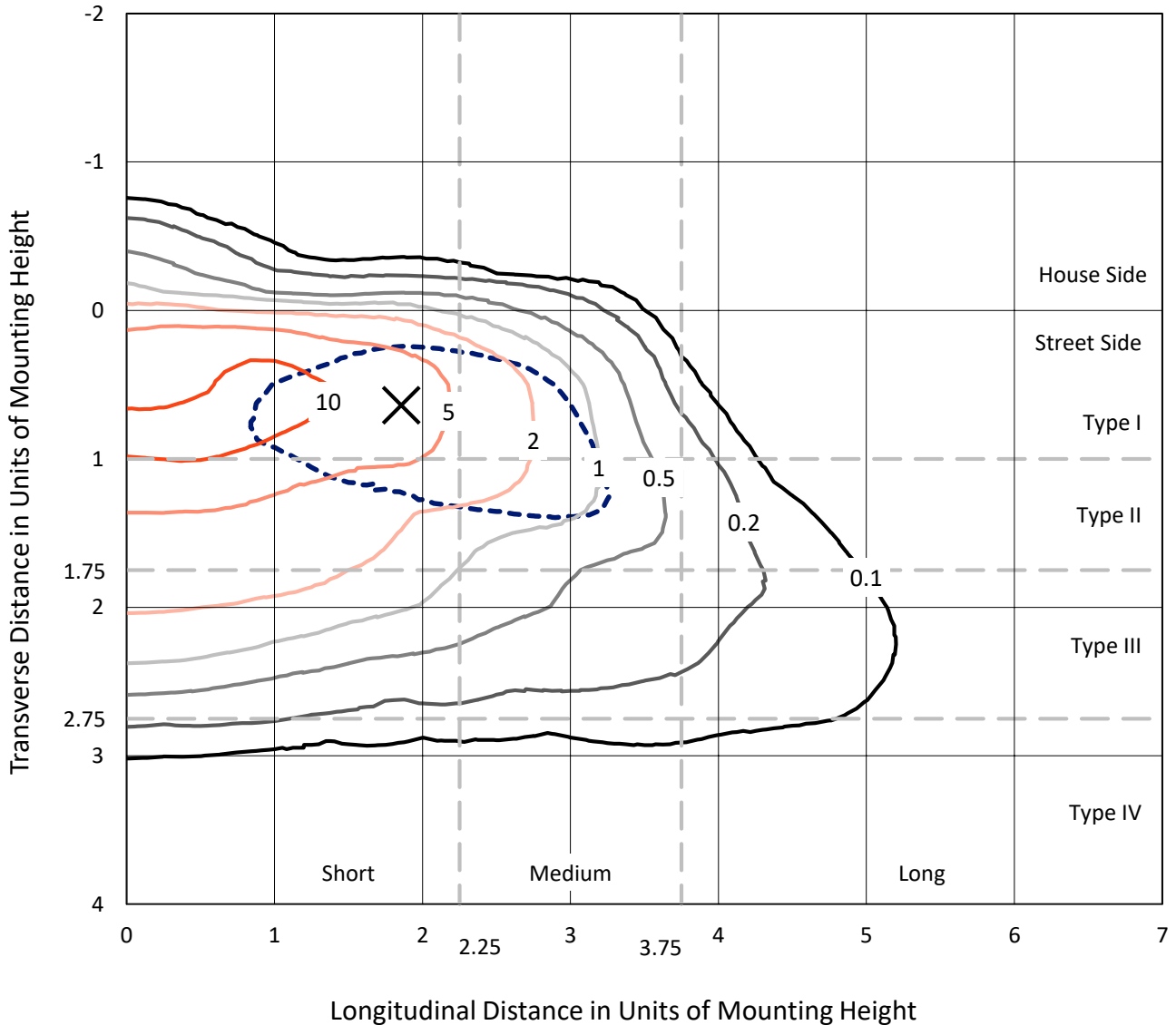
Input Watts (W): 133.3
Input Voltage (V): NR
Input Current (Ain): NR
Voltage Rise (V): NR
Power Factor: NR
Total Harmonic Distortion (THDi): NR
Frequency (hertz): 60
Stabilization Time: NR
Operation Time: NR
Ambient Temperature (°C): NR
Test Distance: 25 FT



REPORT NUMBER: P149393
 CATALOG NUMBER: VWM-F05-LED-E1-SL2-HSS-8030

Iso-Footcandle Lines of Horizontal Illumination

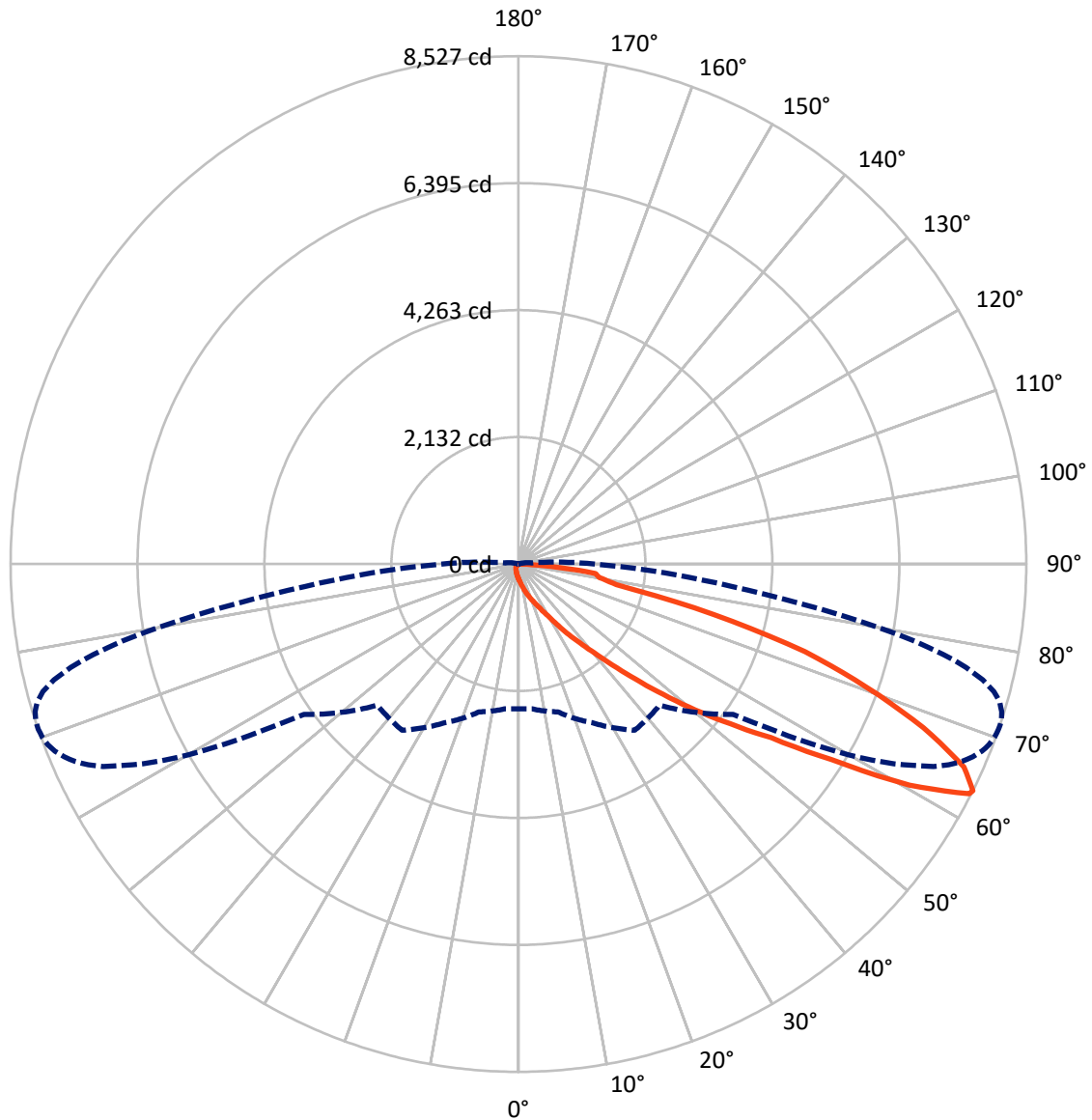
× Max cd
 - - - 1/2 Max cd



Based on 10 foot mounting height. Maximum calculated value = 13.4 fc
 Type II - Short - Non-Cutoff

REPORT NUMBER: P149393
CATALOG NUMBER: VWM-F05-LED-E1-SL2-HSS-8030

Luminous Intensity Polar Plot



— Vertical Plane Through 71-Deg Lateral - - - Horizontal Cone Through 63-Deg Vertical

REPORT NUMBER: P149393

CATALOG NUMBER: VWM-F05-LED-E1-SL2-HSS-8030

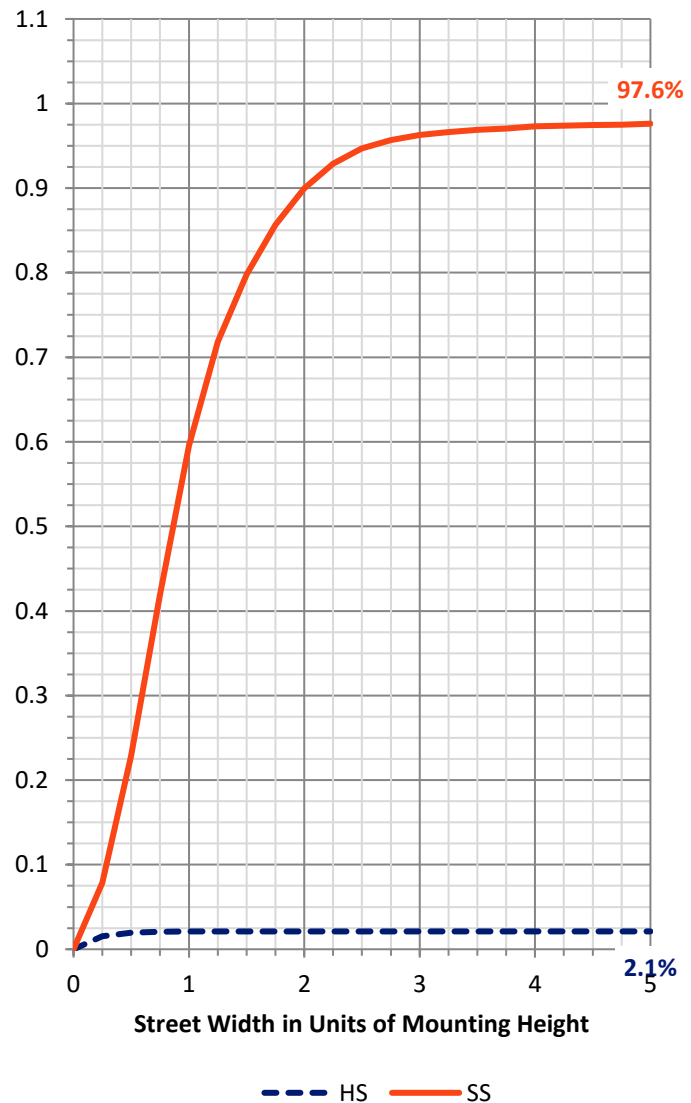
FLUX DISTRIBUTION:

		Downward	Upward	Total
House Side	Lumens	135.6	0.0	135.6
	% Fixture	2.1	0.0	2.1
Street Side	Lumens	6252.0	0.0	6252.0
	% Fixture	97.9	0.0	97.9
Total	Lumens	6387.6	0.0	6387.6
	% Fixture	100.0	0.0	100.0

Coefficient of Utilization

ZONAL LUMENS:

Zone	Lumens	% Fixture
0°-10°	27.1	0.4
10°-20°	105.0	1.6
20°-30°	213.3	3.3
30°-40°	521.2	8.2
40°-50°	1165.6	18.2
50°-60°	1639.0	25.7
60°-70°	1927.3	30.2
70°-80°	695.9	10.9
80°-90°	93.1	1.5
90°-100°	0.0	0.0
100°-110°	0.0	0.0
110°-120°	0.0	0.0
120°-130°	0.0	0.0
130°-140°	0.0	0.0
140°-150°	0.0	0.0
150°-160°	0.0	0.0
160°-170°	0.0	0.0
170°-180°	0.0	0.0
0°-90°	6387.6	100.0
0°-180°	6387.6	100.0



REPORT NUMBER: P149393

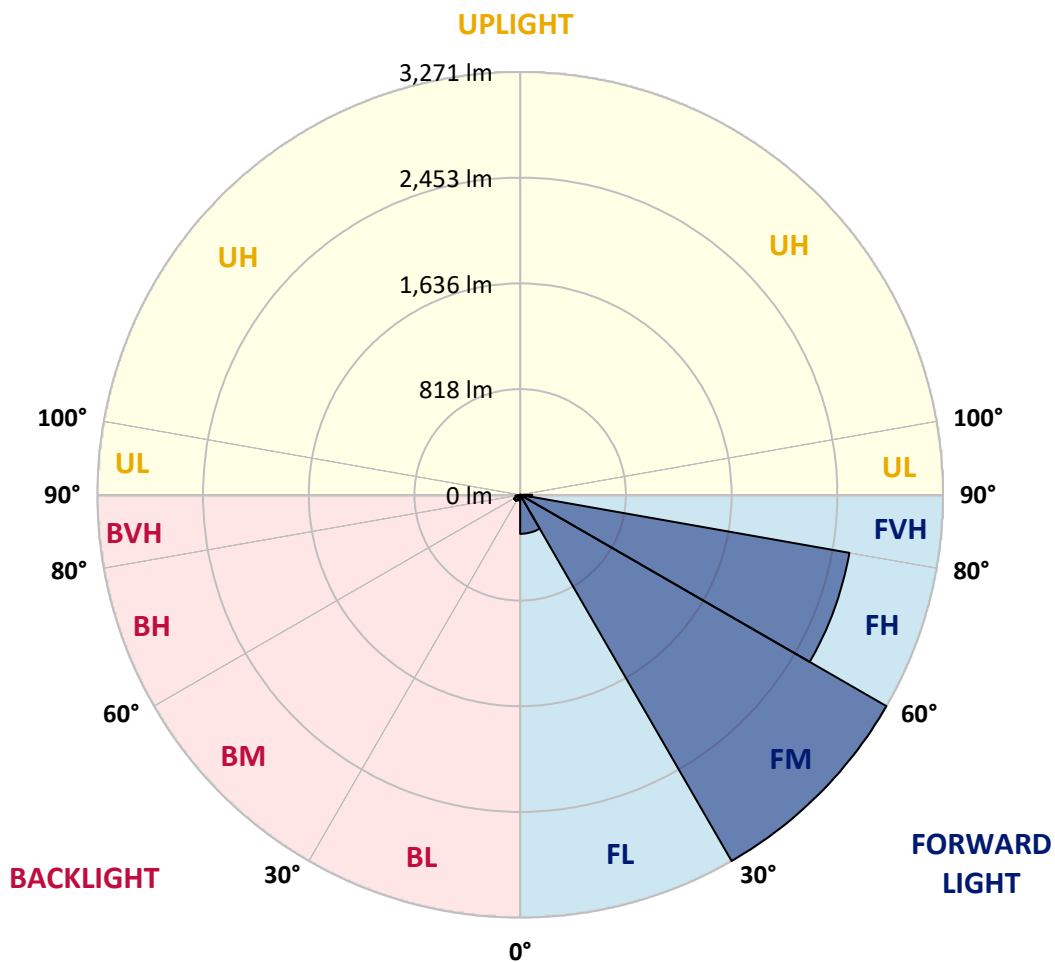
CATALOG NUMBER: VWM-F05-LED-E1-SL2-HSS-8030

LUMINAIRE CLASSIFICATION SYSTEM LUMEN TABLE AND BUG RATING:

Zone	Lumens	% Fixture	Zone Rating/Lumen Limit		
			B	U	G
FL (0°-30°)	301.8	4.7			
FM (30°-60°)	3271.2	51.2			
FH (60°-80°)	2586.1	40.5			G2/5000
FVH (80°-90°)	92.9	1.5			G1/100
BL (0°-30°)	43.6	0.7	B0/110		
BM (30°-60°)	54.6	0.9	B0/220		
BH (60°-80°)	37.2	0.6	B0/110		G0/110
BVH (80°-90°)	0.2	0.0			G0/10
UL (90°-100°)	0.0	0.0		U0/0	
UH (100°-180°)	0.0	0.0		U0/0	

BUG Rating: B0-U0-G2

Type II Short





REPORT NUMBER: P149393
 CATALOG NUMBER: VWM-F05-LED-E1-SL2-HSS-8030

CANDELA DISTRIBUTION (FULL):

	0°	5°	15°	25°	35°	45°	55°	56°	57°	58°	59°
0°	245.0	245.0	245.0	245.0	245.0	245.0	245.0	245.0	245.0	245.0	245.0
2.5°	320.5	324.0	321.7	315.9	308.9	299.6	291.5	291.5	290.3	286.8	288.0
5°	420.4	421.5	416.9	402.9	390.2	370.4	348.4	346.0	343.7	340.2	339.1
7.5°	517.9	522.6	517.9	502.8	477.3	447.1	412.2	408.8	401.8	401.8	397.1
10°	617.8	617.8	613.1	595.7	572.5	529.5	485.4	479.6	471.5	469.1	462.2
12.5°	688.6	688.6	686.3	677.0	658.4	620.1	566.7	560.9	550.4	546.9	538.8
15°	716.5	716.5	717.6	725.8	726.9	709.5	653.8	649.1	638.7	629.4	625.9
17.5°	733.9	732.7	732.7	744.3	765.2	776.9	740.9	736.2	724.6	720.0	708.3
20°	772.2	769.9	762.9	762.9	782.7	823.3	823.3	822.1	809.4	805.9	800.1
22.5°	829.1	826.8	805.9	788.5	797.8	848.9	896.5	894.1	889.5	884.9	881.4
25°	922.0	913.9	877.9	826.8	818.7	873.2	952.2	958.0	961.5	961.5	963.8
27.5°	1062.5	1052.1	988.2	893.0	857.0	912.7	1013.8	1025.4	1035.8	1038.1	1048.6
30°	1257.6	1239.0	1147.3	1007.9	925.5	970.8	1104.3	1117.1	1132.2	1136.8	1153.1
32.5°	1578.1	1567.7	1479.4	1270.4	1093.9	1084.6	1230.9	1247.2	1266.9	1275.0	1294.8
35°	2065.8	2068.1	1996.1	1808.0	1564.2	1436.4	1457.3	1471.3	1478.2	1502.6	1513.1
37.5°	2396.8	2402.6	2418.8	2344.5	2170.3	2040.3	1876.5	1891.6	1855.6	1859.1	1860.3
40°	2577.9	2596.5	2691.7	2763.7	2749.8	2674.3	2543.1	2551.2	2483.9	2468.8	2395.6
42.5°	2698.7	2723.1	2875.2	3098.2	3212.0	3280.5	3250.3	3246.8	3194.5	3174.8	3113.2
45°	2774.2	2796.2	2987.8	3316.5	3578.9	3778.6	3861.1	3870.4	3826.2	3806.5	3755.4
47.5°	2770.7	2796.2	3001.8	3397.7	3784.4	4103.8	4336.0	4347.6	4374.3	4356.9	4360.4
50°	2617.4	2641.8	2848.5	3259.6	3724.1	4252.4	4677.4	4714.6	4757.5	4786.6	4800.5
52.5°	2431.6	2449.0	2632.5	3022.7	3466.3	4190.9	4879.5	4943.3	5007.2	5061.8	5100.1
55°	2363.1	2382.8	2526.8	2850.8	3259.6	3933.1	4973.5	5067.6	5158.2	5247.6	5320.7
57.5°	2399.1	2417.7	2521.0	2769.5	3136.5	3661.3	5000.2	5146.6	5295.2	5440.3	5584.3
60°	2531.5	2551.2	2639.5	2845.0	3104.0	3504.6	4895.7	5138.4	5385.8	5638.9	5877.0
62.5°	2479.2	2487.3	2617.4	2977.4	3336.2	3371.0	4516.0	4855.1	5232.5	5622.7	6007.0
63°	2429.3	2438.6	2571.0	2941.4	3407.0	3351.3	4398.7	4756.4	5154.7	5575.0	5993.1
65°	2202.8	2204.0	2305.0	2597.7	3328.1	3386.1	3876.2	4217.6	4675.1	5179.1	5707.4
67.5°	1644.3	1636.2	1733.7	1956.7	2612.8	3387.3	3326.9	3518.5	3836.7	4283.8	4757.5
70°	582.9	570.2	728.1	1037.0	1628.0	2770.7	2858.9	2871.7	2960.0	3201.5	3498.8
72.5°	189.3	192.8	232.2	379.7	750.2	1864.9	2588.4	2548.9	2525.7	2524.5	2564.0
75°	75.5	76.6	92.9	168.4	336.8	898.8	2266.7	2288.8	2296.9	2308.5	2321.3
77.5°	36.0	39.5	52.3	94.1	167.2	444.7	1622.2	1809.2	1916.0	1998.5	2048.4
80°	12.8	15.1	29.0	58.1	77.8	204.4	854.7	1031.2	1187.9	1390.0	1564.2
82.5°	0.0	0.0	5.8	40.6	43.0	82.4	350.7	411.1	470.3	609.6	782.7
85°	0.0	0.0	0.0	11.6	12.8	13.9	118.4	142.8	160.2	187.0	216.0
87.5°	0.0	0.0	0.0	0.0	0.0	0.0	1.2	3.5	7.0	17.4	26.7
90°	0.0	0.0	0.0	0.0	0.0	0.0	0.0	0.0	0.0	0.0	0.0



REPORT NUMBER: P149393
 CATALOG NUMBER: VWM-F05-LED-E1-SL2-HSS-8030

CANDELA DISTRIBUTION (continued):

	60°	61°	62°	64°	65°	66°	67°	68°	69°	70°	71°
0°	245.0	245.0	245.0	245.0	245.0	245.0	245.0	245.0	245.0	245.0	245.0
2.5°	285.7	284.5	284.5	282.2	281.0	278.7	277.5	274.0	272.9	272.9	272.9
5°	337.9	333.3	330.9	325.1	321.7	320.5	314.7	312.4	308.9	310.0	304.2
7.5°	396.0	387.8	384.4	376.2	373.9	365.8	363.5	357.7	354.2	347.2	344.9
10°	459.8	449.4	443.6	430.8	427.3	421.5	414.6	407.6	401.8	394.8	391.3
12.5°	533.0	523.7	519.1	501.6	493.5	485.4	476.1	466.8	457.5	451.7	443.6
15°	618.9	603.8	599.2	582.9	569.0	558.5	545.8	534.2	527.2	515.6	507.5
17.5°	703.7	688.6	685.1	660.7	645.6	638.7	624.7	609.6	596.9	585.3	572.5
20°	788.5	778.0	768.7	745.5	729.2	717.6	699.1	684.0	673.5	657.3	641.0
22.5°	873.2	862.8	855.8	831.4	816.3	800.1	783.8	767.6	752.5	732.7	714.2
25°	960.3	953.4	949.9	927.8	913.9	898.8	882.5	864.0	845.4	823.3	803.6
27.5°	1050.9	1053.2	1046.3	1041.6	1026.5	1016.1	990.5	977.8	963.8	937.1	912.7
30°	1165.9	1172.8	1170.5	1174.0	1164.7	1157.7	1138.0	1121.7	1105.5	1079.9	1052.1
32.5°	1311.0	1320.3	1325.0	1337.7	1333.1	1330.8	1325.0	1301.7	1290.1	1246.0	1234.4
35°	1535.1	1530.5	1550.2	1560.7	1556.0	1553.7	1546.8	1534.0	1520.0	1488.7	1459.7
37.5°	1826.6	1831.3	1838.2	1817.3	1803.4	1802.2	1781.3	1768.5	1748.8	1714.0	1679.1
40°	2360.8	2331.7	2299.2	2211.0	2172.7	2150.6	2089.0	2071.6	2038.0	1990.3	1954.3
42.5°	3055.2	3026.2	2928.6	2781.1	2702.2	2593.0	2543.1	2481.5	2433.9	2356.1	2314.3
45°	3745.0	3661.3	3649.7	3477.9	3380.3	3236.3	3146.9	3043.6	2935.6	2833.4	2759.1
47.5°	4326.7	4308.1	4251.2	4146.7	4056.2	3935.4	3820.4	3661.3	3549.9	3404.7	3271.2
50°	4792.4	4791.2	4770.3	4709.9	4634.5	4536.9	4435.9	4301.2	4174.6	3996.9	3854.1
52.5°	5140.7	5159.3	5166.3	5147.7	5118.7	5032.8	4981.7	4869.0	4762.2	4611.2	4456.8
55°	5396.2	5464.7	5499.6	5539.0	5530.9	5500.7	5498.4	5425.2	5376.5	5256.9	5147.7
57.5°	5712.1	5824.7	5932.7	6124.3	6131.3	6198.6	6233.5	6268.3	6277.6	6230.0	6194.0
60°	6113.9	6343.8	6548.2	6948.8	7053.3	7218.2	7325.0	7441.1	7539.8	7548.0	7545.6
62.5°	6397.2	6751.4	7081.2	7675.7	7878.9	8069.4	8212.2	8324.8	8393.3	8463.0	8495.5
63°	6405.3	6793.2	7143.9	7757.0	7970.7	8151.8	8287.7	8392.2	8464.2	8506.0	8526.9
65°	6209.1	6679.4	7097.4	7708.2	7909.1	8091.4	8162.3	8230.8	8265.6	8281.9	8220.3
67.5°	5262.7	5722.5	6210.2	6893.0	7064.9	7283.2	7341.3	7376.1	7392.4	7388.9	7336.6
70°	3935.4	4320.9	4863.2	5643.6	5871.2	6084.8	6217.2	6274.1	6292.7	6286.9	6209.1
72.5°	2747.5	2973.9	3421.0	4289.6	4599.6	4873.7	5037.4	5122.2	5139.6	5104.7	5032.8
75°	2307.4	2319.0	2420.0	2894.9	3185.2	3477.9	3662.5	3715.9	3681.1	3575.4	3391.9
77.5°	2060.0	2085.6	2085.6	2156.4	2213.3	2294.6	2312.0	2181.9	2031.0	1835.9	1678.0
80°	1727.9	1817.3	1880.0	1932.3	1938.1	1921.8	1878.9	1805.7	1689.6	1540.9	1376.1
82.5°	1049.7	1226.3	1298.3	1567.7	1700.0	1789.4	1782.5	1684.9	1596.7	1442.2	1301.7
85°	264.8	285.7	310.0	402.9	451.7	551.6	614.3	643.3	653.8	600.4	543.5
87.5°	25.5	17.4	29.0	22.1	31.4	23.2	31.4	29.0	36.0	38.3	41.8
90°	0.0	0.0	0.0	0.0	0.0	0.0	0.0	0.0	0.0	0.0	0.0



REPORT NUMBER: P149393
 CATALOG NUMBER: VWM-F05-LED-E1-SL2-HSS-8030

CANDELA DISTRIBUTION (continued):

	72°	73°	74°	75°	76°	77°	78°	79°	80°	81°	82°
0°	245.0	245.0	245.0	245.0	245.0	245.0	245.0	245.0	245.0	245.0	245.0
2.5°	270.6	269.4	268.2	267.1	265.9	264.8	262.4	262.4	260.1	259.0	257.8
5°	300.8	298.4	297.3	295.0	291.5	289.1	285.7	281.0	277.5	276.4	274.0
7.5°	339.1	333.3	330.9	327.5	322.8	315.9	311.2	307.7	301.9	298.4	291.5
10°	382.0	376.2	369.3	362.3	355.3	347.2	341.4	336.8	327.5	322.8	314.7
12.5°	436.6	426.2	418.0	408.8	399.5	390.2	383.2	369.3	361.1	350.7	343.7
15°	492.4	483.1	473.8	462.2	448.2	433.1	426.2	413.4	402.9	386.7	377.4
17.5°	559.7	542.3	528.4	514.4	501.6	487.7	473.8	454.0	438.9	425.0	406.4
20°	625.9	605.0	589.9	571.3	552.7	530.7	514.4	500.5	479.6	461.0	441.3
22.5°	696.7	675.8	651.4	632.9	607.3	589.9	567.8	544.6	523.7	499.3	474.9
25°	782.7	760.6	732.7	708.3	679.3	654.9	628.2	601.5	576.0	548.1	516.7
27.5°	888.3	865.1	834.9	805.9	767.6	737.4	711.8	675.8	643.3	608.5	572.5
30°	1021.9	996.3	959.2	917.4	879.0	845.4	809.4	761.8	725.8	684.0	637.5
32.5°	1196.1	1165.9	1115.9	1076.5	1028.8	984.7	934.8	887.2	836.1	781.5	728.1
35°	1415.5	1387.7	1329.6	1271.5	1219.3	1167.0	1104.3	1049.7	977.8	911.6	843.1
37.5°	1643.1	1593.2	1539.8	1477.1	1412.1	1349.3	1272.7	1197.2	1114.8	1042.8	956.9
40°	1903.2	1842.9	1798.7	1731.4	1639.7	1550.2	1479.4	1385.3	1282.0	1185.6	1084.6
42.5°	2259.7	2192.4	2113.4	2011.2	1945.1	1840.5	1748.8	1637.3	1501.5	1393.5	1271.5
45°	2672.0	2580.2	2503.6	2404.9	2324.8	2194.7	2087.9	1939.2	1803.4	1661.7	1513.1
47.5°	3142.3	3028.5	2917.0	2819.5	2691.7	2564.0	2428.1	2270.2	2096.0	1940.4	1763.9
50°	3682.2	3520.8	3366.4	3241.0	3065.6	2918.2	2770.7	2593.0	2400.3	2221.4	2020.5
52.5°	4282.6	4095.6	3891.3	3698.5	3495.3	3306.0	3128.3	2924.0	2709.1	2490.8	2266.7
55°	5007.2	4866.7	4626.3	4381.3	4109.6	3856.4	3627.7	3374.5	3113.2	2826.4	2590.7
57.5°	6141.7	6073.2	5872.3	5627.3	5273.1	4965.4	4577.6	4267.5	3888.9	3494.1	3189.9
60°	7679.2	7594.4	7481.8	7283.2	7002.2	6584.2	6156.8	5674.9	5098.9	4552.0	4032.9
62.5°	8499.0	8468.8	8377.1	8240.1	7977.6	7647.8	7217.0	6687.5	6037.2	5373.0	4711.1
63°	8523.4	8485.1	8406.1	8266.8	8035.7	7716.3	7293.7	6779.2	6142.9	5465.9	4790.1
65°	8193.6	8178.5	8098.4	7946.3	7788.3	7544.5	7217.0	6774.6	6240.4	5600.6	4928.2
67.5°	7267.0	7221.7	7098.6	7052.1	6941.8	6772.3	6522.6	6218.4	5836.3	5333.5	4752.9
70°	6146.4	6079.0	5924.6	5842.1	5707.4	5600.6	5448.5	5231.3	4995.6	4644.9	4211.8
72.5°	4958.4	4819.1	4677.4	4462.6	4274.5	4084.0	3915.7	3762.4	3503.4	3361.7	3033.1
75°	3220.1	2966.9	2724.2	2399.1	2106.5	1847.5	1595.5	1467.8	1201.9	1093.9	939.4
77.5°	1528.2	1386.5	1196.1	1048.6	860.5	702.5	573.6	430.8	337.9	264.8	202.1
80°	1233.2	1113.6	998.7	865.1	723.4	577.1	442.4	330.9	234.6	162.6	115.0
82.5°	1099.7	969.6	828.0	736.2	639.8	523.7	429.7	350.7	259.0	189.3	128.9
85°	427.3	360.0	277.5	226.4	176.5	145.2	131.2	90.6	70.8	55.7	43.0
87.5°	37.2	30.2	24.4	16.3	17.4	9.3	10.5	7.0	5.8	5.8	4.6
90°	0.0	0.0	0.0	0.0	0.0	0.0	0.0	0.0	0.0	0.0	0.0



REPORT NUMBER: P149393

CATALOG NUMBER: VWM-F05-LED-E1-SL2-HSS-8030

CANDELA DISTRIBUTION (continued):

	83°	84°	85°	86°	87°	88°	89°	90°	95°	105°	115°
0°	245.0	245.0	245.0	245.0	245.0	245.0	245.0	245.0	245.0	245.0	245.0
2.5°	256.6	255.5	254.3	252.0	252.0	249.7	248.5	247.3	241.5	228.8	218.3
5°	269.4	267.1	264.8	261.3	259.0	255.5	253.1	249.7	236.9	212.5	191.6
7.5°	288.0	283.3	279.9	272.9	269.4	264.8	261.3	255.5	234.6	197.4	168.4
10°	310.0	301.9	296.1	288.0	281.0	275.2	269.4	261.3	232.2	181.2	147.5
12.5°	336.8	327.5	315.9	306.6	297.3	289.1	281.0	270.6	228.8	167.2	131.2
15°	363.5	349.5	341.4	328.6	315.9	304.2	292.6	283.3	229.9	152.1	117.3
17.5°	393.7	379.7	362.3	348.4	334.4	319.3	305.4	286.8	224.1	140.5	106.8
20°	422.7	402.9	386.7	369.3	349.5	330.9	313.5	297.3	219.5	128.9	97.5
22.5°	454.0	430.8	409.9	387.8	363.5	342.6	321.7	300.8	211.3	118.4	89.4
25°	492.4	465.7	435.5	408.8	383.2	357.7	330.9	305.4	203.2	109.2	83.6
27.5°	538.8	504.0	473.8	440.1	404.1	371.6	342.6	314.7	195.1	102.2	77.8
30°	598.0	557.4	514.4	471.5	433.1	396.0	355.3	320.5	187.0	95.2	72.0
32.5°	677.0	625.9	573.6	523.7	472.6	425.0	382.0	336.8	182.3	89.4	66.2
35°	781.5	715.3	651.4	588.7	527.2	469.1	413.4	362.3	182.3	82.4	59.2
37.5°	880.2	803.6	722.3	644.5	571.3	504.0	437.8	376.2	173.0	76.6	53.4
40°	987.0	895.3	800.1	708.3	620.1	536.5	461.0	390.2	164.9	69.7	47.6
42.5°	1150.8	1034.7	910.4	803.6	697.9	594.5	500.5	416.9	154.4	62.7	41.8
45°	1365.6	1218.1	1071.8	941.8	807.1	680.5	569.0	465.7	152.1	56.9	36.0
47.5°	1595.5	1421.3	1249.5	1083.4	925.5	778.0	644.5	520.2	152.1	51.1	31.4
50°	1824.3	1606.0	1422.5	1229.7	1052.1	877.9	718.8	577.1	153.3	46.4	25.5
52.5°	2031.0	1797.6	1592.0	1369.1	1172.8	970.8	797.8	632.9	151.0	40.6	20.9
55°	2317.8	2043.8	1805.7	1559.5	1329.6	1102.0	905.8	716.5	152.1	36.0	17.4
57.5°	2846.2	2524.5	2237.7	1914.9	1650.1	1356.3	1118.3	888.3	166.1	30.2	12.8
60°	3604.4	3186.4	2783.5	2389.8	2053.0	1703.5	1394.6	1124.1	195.1	24.4	9.3
62.5°	4114.2	3567.3	3086.5	2652.2	2260.9	1895.1	1558.4	1250.6	214.8	19.7	5.8
63°	4166.5	3601.0	3117.9	2669.7	2270.2	1904.4	1565.3	1259.9	216.0	18.6	5.8
65°	4265.2	3659.0	3135.3	2673.1	2260.9	1891.6	1560.7	1258.8	218.3	15.1	4.6
67.5°	4152.5	3569.6	3034.3	2573.3	2179.6	1816.2	1502.6	1212.3	217.1	10.5	3.5
70°	3713.6	3230.5	2760.2	2330.6	1972.9	1644.3	1367.9	1105.5	199.7	7.0	2.3
72.5°	2726.6	2397.9	2033.3	1723.3	1486.4	1234.4	1053.2	830.3	154.4	4.6	1.2
75°	808.2	736.2	618.9	545.8	481.9	398.3	354.2	276.4	79.0	2.3	0.0
77.5°	161.4	146.3	131.2	119.6	112.6	96.4	91.7	75.5	32.5	1.2	0.0
80°	84.8	69.7	59.2	52.3	45.3	37.2	31.4	25.5	5.8	0.0	0.0
82.5°	81.3	54.6	39.5	32.5	27.9	22.1	17.4	12.8	3.5	0.0	0.0
85°	30.2	23.2	17.4	13.9	11.6	10.5	8.1	7.0	0.0	0.0	0.0
87.5°	4.6	3.5	3.5	2.3	2.3	1.2	1.2	1.2	0.0	0.0	0.0
90°	0.0	0.0	0.0	0.0	0.0	0.0	0.0	0.0	0.0	0.0	0.0



REPORT NUMBER: P149393

CATALOG NUMBER: VWM-F05-LED-E1-SL2-HSS-8030

CANDELA DISTRIBUTION (continued):

	125°	135°	145°	155°	165°	175°	180°
0°	245.0	245.0	245.0	245.0	245.0	245.0	245.0
2.5°	207.9	198.6	193.9	188.1	188.1	187.0	189.3
5°	173.0	160.2	151.0	144.0	145.2	141.7	142.8
7.5°	146.3	133.5	125.4	120.8	119.6	118.4	118.4
10°	126.6	115.0	108.0	104.5	103.3	103.3	103.3
12.5°	112.6	101.0	95.2	92.9	92.9	91.7	91.7
15°	101.0	91.7	85.9	83.6	83.6	82.4	83.6
17.5°	91.7	82.4	77.8	75.5	75.5	74.3	74.3
20°	83.6	75.5	70.8	67.4	67.4	66.2	67.4
22.5°	76.6	68.5	62.7	60.4	59.2	58.1	59.2
25°	69.7	61.5	55.7	52.3	51.1	51.1	49.9
27.5°	63.9	55.7	48.8	45.3	44.1	44.1	43.0
30°	58.1	48.8	41.8	38.3	37.2	37.2	37.2
32.5°	52.3	41.8	36.0	32.5	31.4	31.4	31.4
35°	46.4	36.0	30.2	26.7	25.5	25.5	25.5
37.5°	39.5	30.2	23.2	20.9	19.7	18.6	18.6
40°	33.7	23.2	17.4	15.1	12.8	12.8	12.8
42.5°	27.9	18.6	12.8	9.3	8.1	7.0	8.1
45°	23.2	13.9	8.1	4.6	3.5	3.5	3.5
47.5°	18.6	9.3	3.5	1.2	1.2	1.2	1.2
50°	13.9	5.8	1.2	0.0	0.0	1.2	1.2
52.5°	10.5	3.5	0.0	0.0	0.0	0.0	0.0
55°	5.8	1.2	0.0	0.0	0.0	0.0	0.0
57.5°	3.5	0.0	0.0	0.0	0.0	0.0	0.0
60°	2.3	0.0	0.0	0.0	0.0	0.0	0.0
62.5°	1.2	0.0	0.0	0.0	0.0	0.0	0.0
63°	1.2	0.0	0.0	0.0	0.0	0.0	0.0
65°	1.2	0.0	0.0	0.0	0.0	0.0	0.0
67.5°	0.0	0.0	0.0	0.0	0.0	0.0	0.0
70°	0.0	0.0	0.0	0.0	0.0	0.0	0.0
72.5°	0.0	0.0	0.0	0.0	0.0	0.0	0.0
75°	0.0	0.0	0.0	0.0	0.0	0.0	0.0
77.5°	0.0	0.0	0.0	0.0	0.0	0.0	0.0
80°	0.0	0.0	0.0	0.0	0.0	0.0	0.0
82.5°	0.0	0.0	0.0	0.0	0.0	0.0	0.0
85°	0.0	0.0	0.0	0.0	0.0	0.0	0.0
87.5°	0.0	0.0	0.0	0.0	0.0	0.0	0.0
90°	0.0	0.0	0.0	0.0	0.0	0.0	0.0

(END OF REPORT)